

C30  
 C31  
 C32  
 C33  
 C40  
 C52  
 C352  
 C52 SUPER  
 C100  
 C100XT  
 C100XS  
 C339  
 C340V  
 C341V  
 XK1016T

STATIONARY ANODE

SPECIAL APPLICATIONS

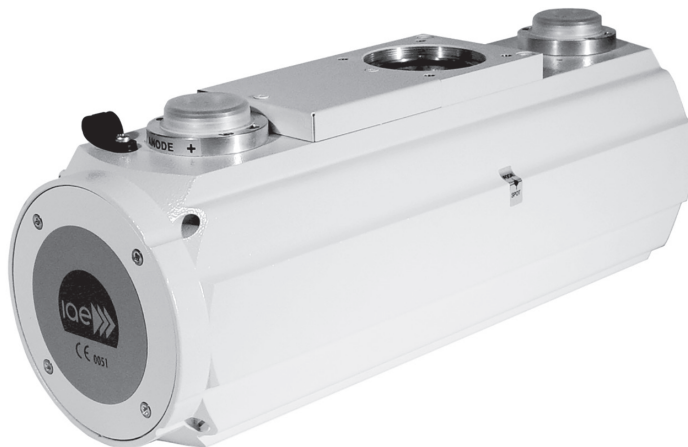
MEDIUM DUTY

HIGH END

CT SCANNERS

MAMMOGRAPHY

HOUSINGS



# C30

Rotating anode X-ray tube unit specifically designed for mobile C-arm equipment. Suitable for max. 72 mm anode diameter inserts.

## Specifications

Overall length	416 mm
Maximum diameter	134 mm
Tube assembly net weight	15 kg
Nominal X-ray tube assembly voltage	125 kv
Maximum tube assembly heat content	500 kJ (670 kHU)
Maximum continuous heat dissipation	140 W (11200 HU/min) 500 W (40000 HU/min) with HE30
Minimum tube assembly inherent filtration	1.2 mm Al / 75 kv
Maximum leakage radiation at 1m from focal spots	0.18 mGy/h

## Insert for Reloading

- X20 P
- RTM70 H/HS
- RTM75 H/HS

## Characteristics

- Lead lined aluminum body
- Internal pump for oil circulation, to improve thermal exchange
- Three devices are present for thermal safety:
  - 1 a bimetallic thermal switch, fitted externally on the anode end
  - 2 a bimetallic thermal switch, internally assembled, series connected with stator common cable
  - 3 a pressure switch
- H.T. cable socket: Parker type Compact Taper or Claymount type MINI75 4pin
- Solutions for higher dissipation available