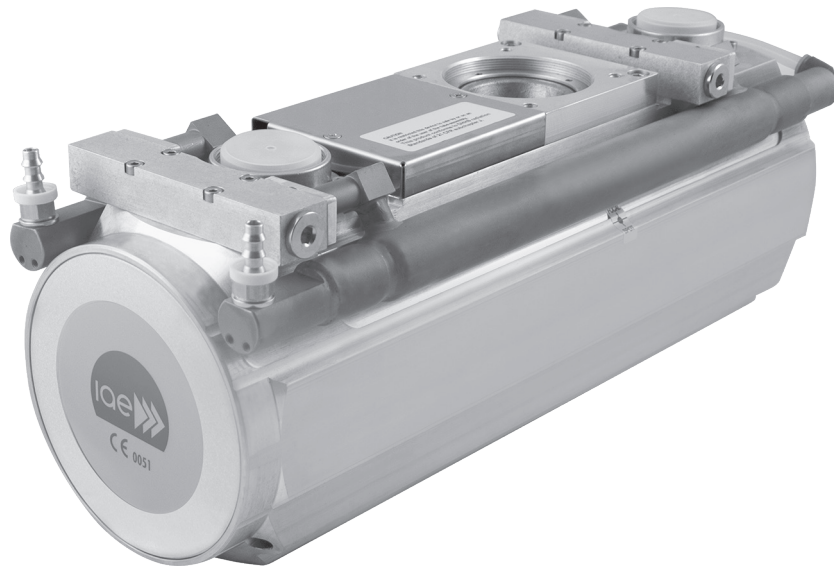


- STATIONARY ANODE
- SPECIAL APPLICATIONS
- MEDIUM DUTY
- HIGH END
- CT SCANNERS
- MAMMOGRAPHY
- HOUSINGS



C32

Rotating anode X-ray tube unit specifically designed for mobile C-arm equipment. Suitable for max. 72 mm anode diameter inserts.

Specifications

Overall length	435 mm
Maximum diameter	150 mm
Tube assembly net weight	15 kg
Nominal X-ray tube assembly voltage	125 kv
Maximum tube assembly heat content	500 kJ (670 kHU)
Maximum continuous heat dissipation	1000 W (80000 HU/min) with HE30 1200 W (96000 HU/min) with HE31
Minimum tube assembly inherent filtration	1.2 mm Al / 75 kv
Maximum leakage radiation at 1m from focal spots	0.22 mGy/h

Insert for Reloading

- X20 P
- RTM70 H/HS

Characteristics

- Lead lined aluminum body
- Internal pump for oil circulation, to improve thermal exchange
- Three devices are present for thermal safety:
 - 1 a bimetallic thermal switch, fitted externally on the anode end
 - 2 a bimetallic thermal switch, internally assembled, series connected with stator common cable
 - 3 a pressure switch
- H.T. cable socket: Parker type Compact Taper or Claymount type MINI75 4pin
- Solutions for higher dissipation available