

STATIONARY ANODE

SPECIAL APPLICATIONS

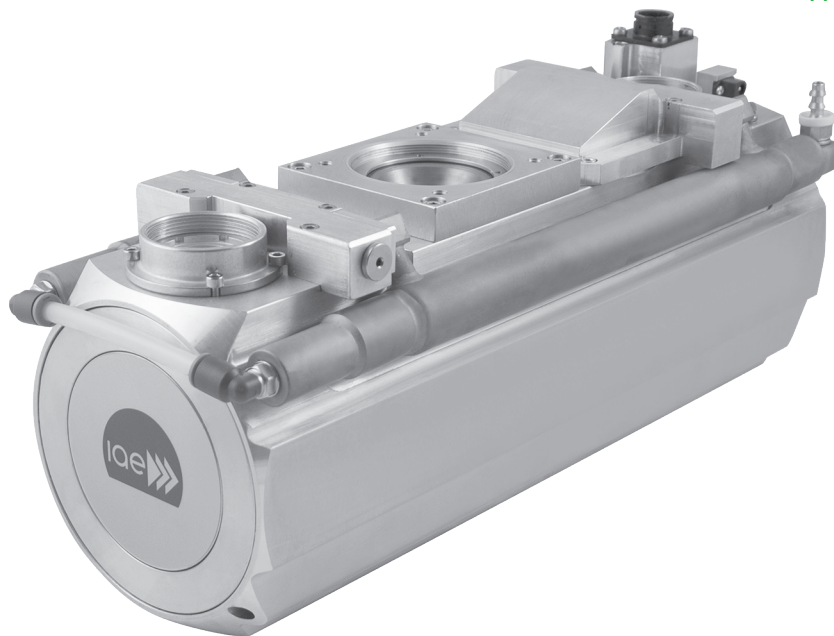
MEDIUM DUTY

HIGH END

CT SCANNERS

MAMMOGRAPHY

HOUSINGS



# C33

Rotating anode X-ray tube unit specifically designed for anode diameter inserts ranging from 70 mm to 80 mm, for medium/ high duty radiographic procedures.

## Specifications

Overall length	416 mm
Maximum diameter	150 mm
Tube assembly net weight	16 kg
Nominal X-ray tube assembly voltage	125 kv
Maximum tube assembly heat content	500 kJ (670 kHU)
Maximum continuous heat dissipation	1000 W (80000 HU/min) with HE30 1200 W (96000 HU/min) with HE31
Minimum tube assembly inherent filtration	1.2 mm Al / 75 kv
Maximum leakage radiation at 1m from focal spots	0.22 mGy/h

## Insert for Reloading

- RTM780
- RTM80

## Characteristics

- Lead lined aluminum body
- Two devices are present for thermal safety:
  - 1 a bimetallic thermal switch, internal assembled, series connected with stator common cable
  - 2 a pressure microswitch, installed on cathode end, activated by bellow expansion