

STATIONARY ANODE

SPECIAL APPLICATIONS

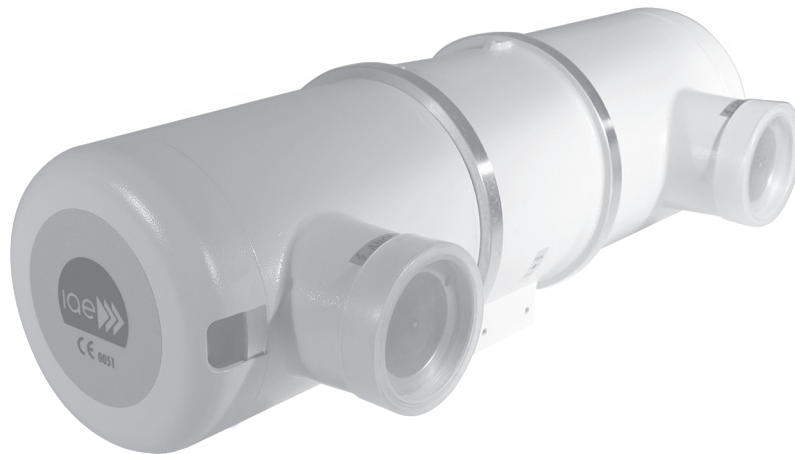
MEDIUM DUTY

HIGH END

CT SCANNERS

MAMMOGRAPHY

HOUSINGS



# C40

Rotating anode X-ray tube unit specifically designed for anode diameter inserts ranging from 70 mm to 80 mm, for medium/high duty radiographic procedures.

## Specifications

Overall length	490 mm
Maximum diameter	152 mm
Tube assembly net weight	16 kg
Nominal X-ray tube assembly voltage	150 kv
Maximum tube assembly heat content	900 kJ (1250 kHU)
Maximum continuous heat dissipation	180 W (14400 HU/min)
Minimum tube assembly inherent filtration	1.2 mm Al / 75 kv
Maximum leakage radiation at 1m from focal spots	0.44 mGy/h

## Insert for Reloading

- X39
- X42
- X76

## Characteristics

- Lead lined aluminum body
- Two devices are present for thermal safety:
  - 1 a bimetallic thermal switch, internally assembled, series connected with stator common cable
  - 2 a pressure microswitch, installed on cathode end, activated by bellow expansion